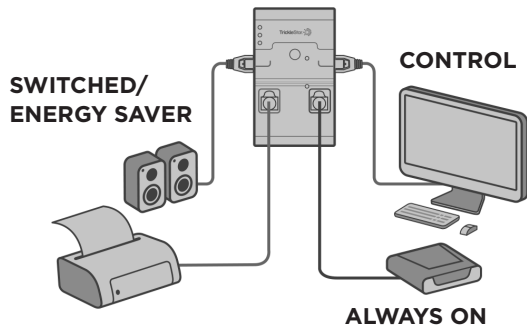


Product Installation Instructions



Smart Strip

To complete installation you will need:

- Smart Strip (located in your kit)
- Devices that you would like to control (TV or Computer system)

Instructions

1. Plug the Smart Strip into a wall outlet.
2. Plug a TV or computer into the Control outlet.
3. Plug a device required to be powered all the time such as a Tivo or Router into the Always On outlet.
4. Plug the devices which can be switched Off when the Control device (TV/computer) is Off or in Standby mode into the Switched outlets.