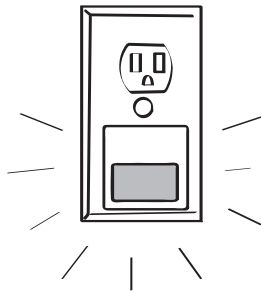
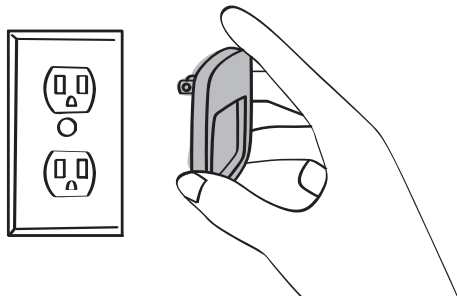


Product Installation Instructions



Night Light

To complete installation you will need:

- Night Light (located in your kit)

Instructions

1. Choose a wall outlet where your night light will be of most use. If you can, replace an existing night light which uses a traditional incandescent bulb.
2. If you are replacing an existing night light, begin by removing your old night light. Be careful, if it was in use the bulb in it may still be hot.
3. Dispose of your old night light properly. **WARNING: Light bulbs are made of thin glass and can cut you if they break.**
4. Carefully remove your new night light from the package.
5. Install your new night light by plugging it into the electrical outlet you chose.