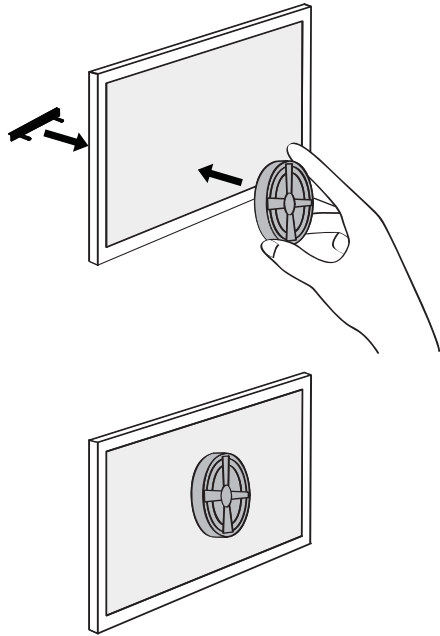


Product Installation Instructions



FilterTone® Alarm

To complete installation you will need:

- FilterTone alarm (located in your kit)
- A parent/guardian
- clean air filter

Instructions

1. Locate and remove the FilterTone alarm from your kit and remove the mounting bar from the back of the FilterTone alarm.
2. Insert the tabs of the mounting bar through any part of the back side of a clean filter until the tabs become visible through the front side.
3. Align the small holes on the back of the FilterTone alarm with the tabs projecting through the filter, and press to fit. Make sure your FilterTone alarm is now attached flush against the filter.

IMPORTANT: *If you have a PLEATED FILTER, you must flatten out the area where you are attaching the FilterTone alarm. The back of the FilterTone alarm must be flush against the filter for the alarm to work properly.*

4. Place the clean filter in your heating/cooling system so that the dirt collects on the same side of the filter that the FilterTone alarm is installed.
5. After dirt collects on the filter and pressure increases, you will hear a continuous pleasant tone alerting you to replace or clean the soiled filter.

The FilterTone alarm can be reused after alerting you to the dirty filter. Remove your FilterTone alarm from your dirty filter by gently pulling out the mounting bar on the back of the filter. You can rinse the FilterTone alarm, let dry, and follow Steps 2-5 to install it on a new clean filter.